

LUXURY MOHAIR

Brighten dull wintry days with a splash of color. This exciting sweater is knitted in pink and lavender luxury mohair yarns and accented with a lacy panel worked in white silky knitting ribbon. Exclusive to Chatelaine Crafts from Estelle Designs. Karen Anderson, Crafts Editor

K445



**To order, please
turn to page 189**

CLASSIC TWIN SET

Team this classic pullover with this matching V-neck cardigan for a look that will never go out of style. The twin set features a simple cable pattern and is made from washable Super Wool for easy care. Designed exclusively for Chatelaine Crafts by Patons Design Studio. Karen Anderson, Crafts Editor

K446

K447



To order, please
turn to page 189

WHITE MIST

THIS WONDERFULLY SOFT
SWEATER WILL KEEP YOU WARM
AND COMFY ALL SEASON
LONG, AND IT'S ALMOST AS EASY
TO KNIT AS IT IS TO WEAR.
DESIGNED EXCLUSIVELY FOR
CHATELAINE CRAFTS
BY PATONS DESIGN STUDIO.
Karen Anderson, Crafts Editor

K439



To order, please
turn to page 193

SENSATIONAL CHENILLE

THE FABULOUS
LOOK OF CHENILLE YARN
IS BACK! THIS EYE-CATCHING
DESIGN IN STRIKING COLORS GIVES
YOU NONSTOP FASHION, DAY
AND NIGHT. DESIGNED EXCLUSIVELY
FOR CHATELAINE CRAFTS BY
FREDERICA BILINSKI.

Karen Anderson, Crafts Editor

K438

RICK LIVINGSTON/HAIR, SHIRLEY LANG/BROOKE INTERNATIONAL STUDIOS/MAKEUP, KELLY JACKSON/SHERRIDA



To order, please
turn to page 193

BIG ON BRIGHTS

K441

K443

K442



To order, please
turn to page 193

The bright tumbling figures (K441), stars (K442) and diamonds (K443) featured on these sweaters will be a surefire hit with kids. The diamond-motif jacket is knitted in heavyweight yarn for outdoor wear. Designed exclusively for Chatelaine Crafts by Bouquet Design Studio.

Karen Anderson, Crafts Editor

RICK LIVINGSTON/HAIR, SHIRLEY LANG/BROOKE INTERNATIONAL STUDIOS/MAKEUP, KELLY JACKSON/SHERRIDA

BLACK DIAMOND

LOOK AND FEEL
TERRIFIC IN THIS SOFT
BLACK SWEATER WITH A STRIKING
RED-AND-WHITE DIAMOND
MOTIF. EXCLUSIVE TO CHATELAINE
CRAFTS FROM ESTELLE DESIGNS.

Karen Anderson, Crafts Editor

K440



To order, please
turn to page 193

RICK LIVINGSTON/HAIR, SHIRLEY LANG/BROOKE INTERNATIONAL STUDIOS/MAKEUP, KELLY JACKSON/SHERIDA



K137

K138

chatelaine
Crafts
exclusive

To order, please turn to page 184

Here are two ways to enjoy the Fair Isle look! The beige sweater set (K137) features a cardigan with a patterned front and a pull-on vest with accenting Fair Isle stripe. The gray set (K138) reverses the look: the pretty pattern is on the vest front, and there is an accenting band on the long-sleeve pull-on. Designed exclusively for Chatelaine Crafts by Cathie Hendra in Schaffhauser Yarns' Viola.



K136

This elegant dress (K136) is both easy-to-knit and easy-care. The champagne color and simple shaping make this a dress for all seasons. Designed exclusively for Chatelaine Crafts by Stella Teindl in Spinrite's Bouquet Viva.

**To order, please
turn to page 184**

chatelaine
Crafts
exclusive

KNOCKOUT KNITS!



K130

The classic cable-front pull-on (K130), above, will coordinate with all autumn shades. It's knitted in Laine dor's subtle multicolored Sonnet, a lightweight tweedy yarn exclusive to Chatelaine Crafts. A new unique yarn combined with simple shaping make this a sensational sweater (K131), right. In cooler weather, wear it over a shirt or another sweater for a great casual look. It's easy to knit in Laine dor's unusual Ripple yarn, exclusive to Chatelaine Crafts. Both sweaters were designed exclusively for Chatelaine Crafts by Dorothy Hovey. Jewelry, M. J. H. Custom Accessories. Skirts and pants, Vogue and Butterick patterns. Hair, The Shirley Lang Studio. Makeup, Lisa Brown. **To order, please turn to page 168**

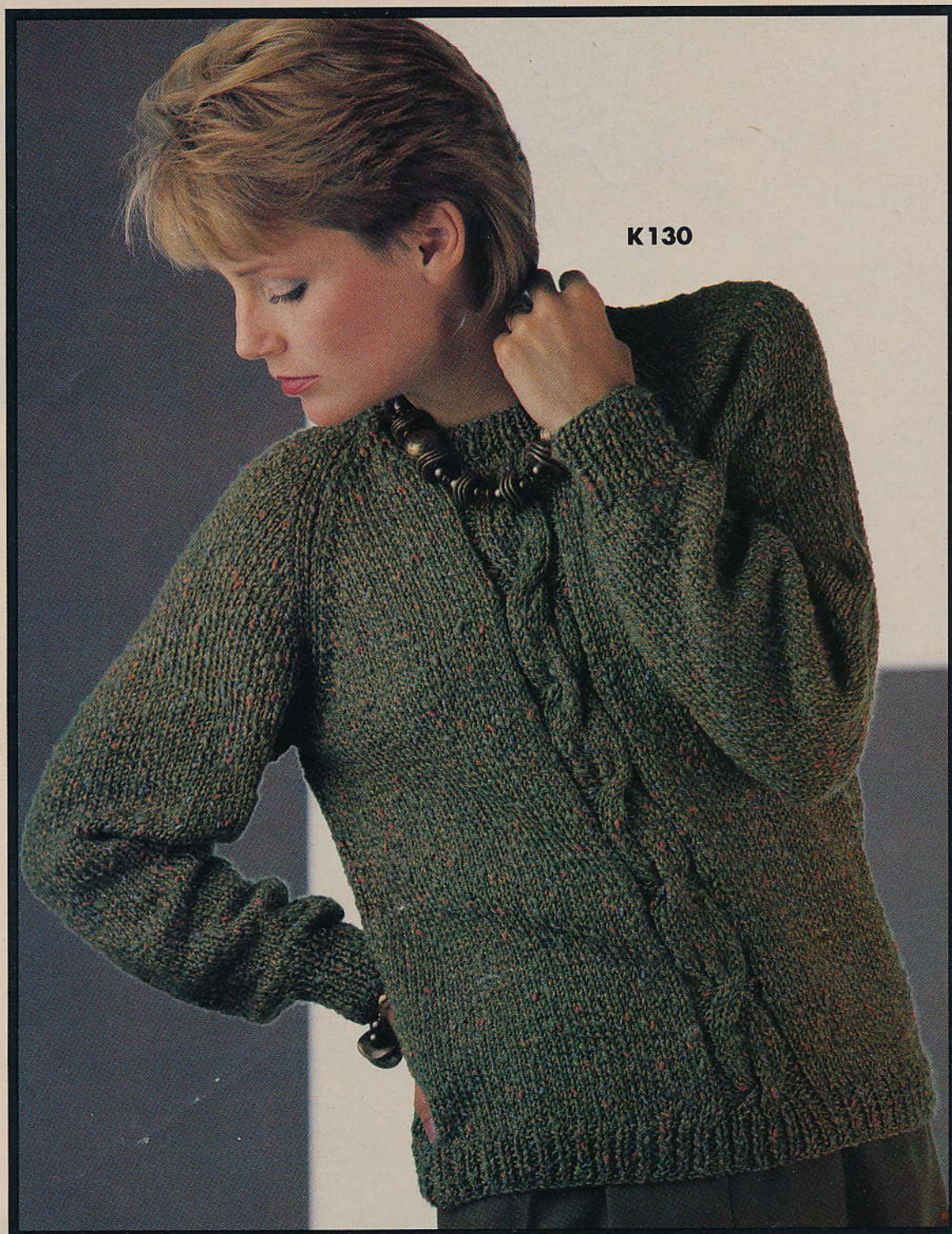
chatelaine
Crafts
exclusive



K129

To order, please turn to page 168

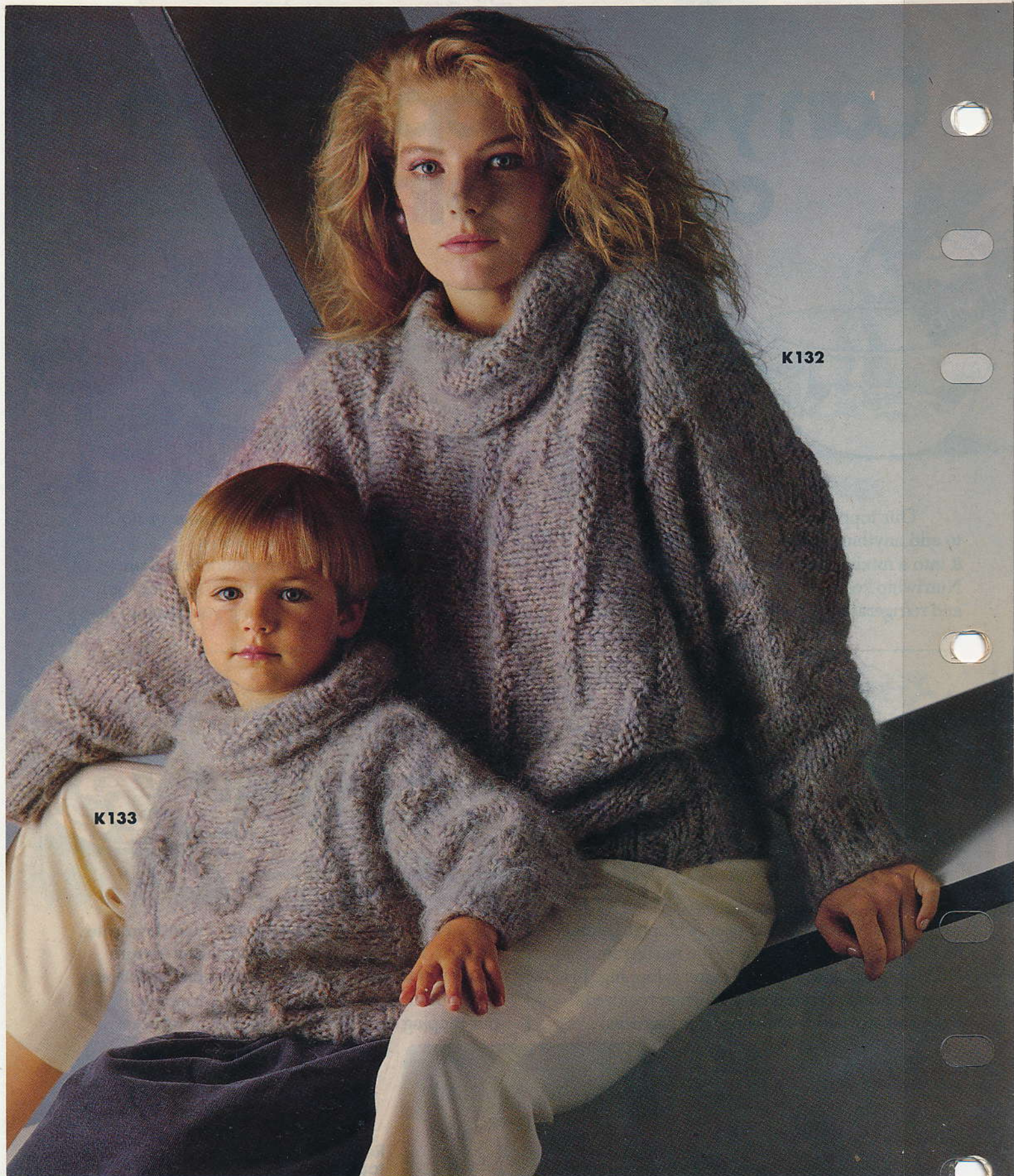
KNOCKOUT KNITS!



K130

The classic cable-front pull-on (K130), above, will coordinate with all autumn shades. It's knitted in Laine dor's subtle multicolored Sonnet, a lightweight tweedy yarn exclusive to Chatelaine Crafts. A new unique yarn combined with simple shaping make this a sensational sweater (K131), right. In cooler weather, wear it over a shirt or another sweater for a great casual look. It's easy to knit in Laine dor's unusual Ripple yarn, exclusive to Chatelaine Crafts. Both sweaters were designed exclusively for Chatelaine Crafts by Dorothy Hovey. Jewelry, M. J. H. Custom Accessories. Skirts and pants, Vogue and Butterick patterns. Hair, The Shirley Lang Studio. Makeup, Lisa Brown. **To order, please turn to page 168**

chatelaine
Crafts
exclusive



The mother (K132) and daughter (K133) pull-ons, above, with bat-wing sleeves, are perfect for winter. They feature split turtlenecks and random garter-stitch detailing. The sweaters are knitted in heathered Visone from Viana. Designed exclusively for Chatelaine Crafts by Dorothy Hovey. For cold days, nothing beats this long cabled and ribbed sweater (K134), right, designed exclusively for Chatelaine Crafts by Paton's International Design Studio in their Shetland Chunky with Mountain Wool. To order, turn to page 184.

Molly Copus Christie, Crafts Editor

IRISH CHARM

THE BEAUTY AND CHARM
OF THE IRISH COUNTRYSIDE ARE
CAPTURED IN THIS
ARAN-STYLE PULLOVER. AND
IT'S NOT JUST FOR EXPERT
KNITTERS—ALL THAT TEXTURE
COMES FROM AN
EASY 12-ROW PATTERN.

EXCLUSIVE TO
CHATELAINE CRAFTS FROM
ESTELLE DESIGNS.

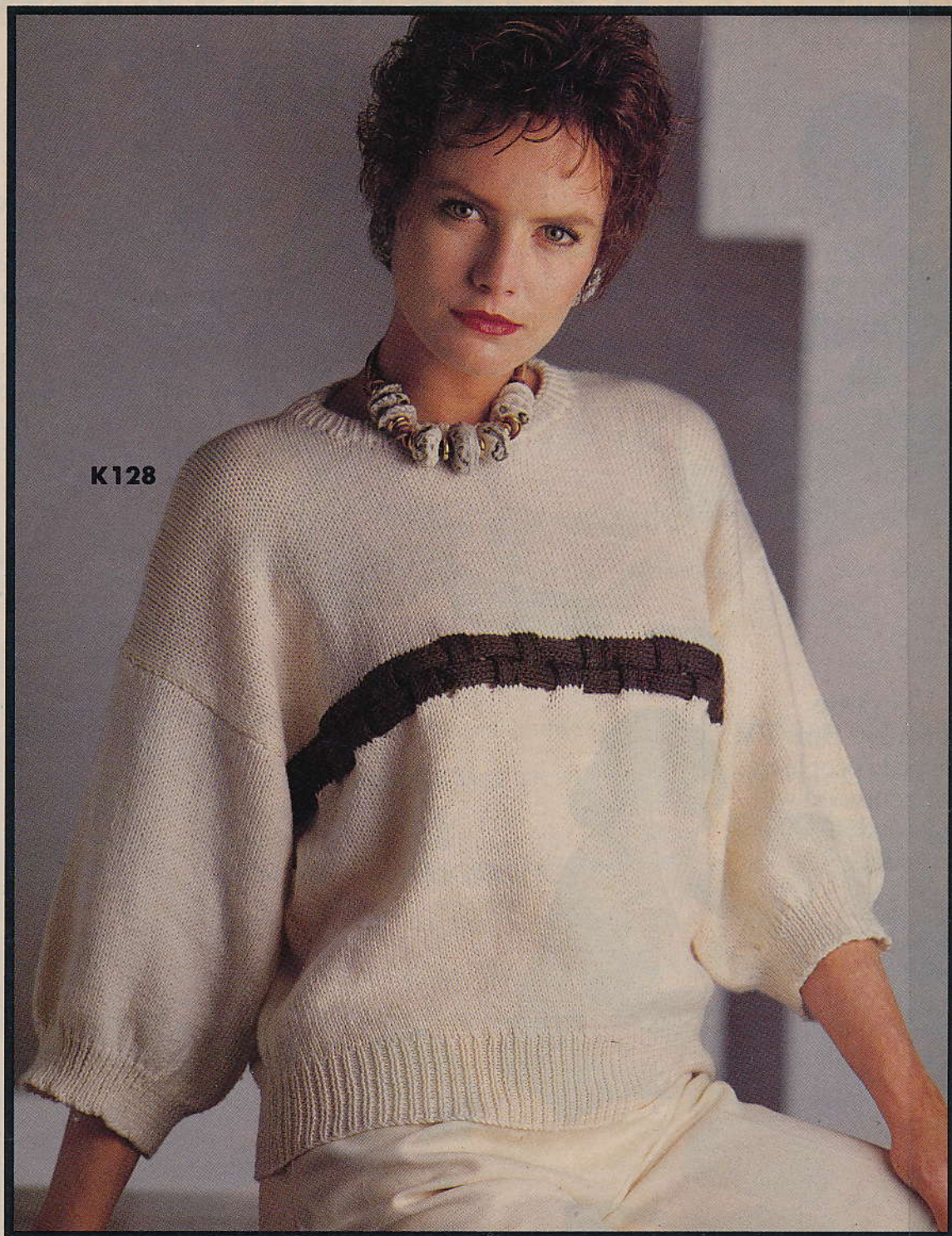
Karen Anderson, Crafts Editor

K437



**To order, please
turn to page 193**

KNOCKOUT KNITS!



The ivory sweater, above, is so soft, you must wear it to believe it! Its simple styling is highlighted with striking interwoven bands knitted in charcoal brown (K128). The richly cabled sweater in fashionable fuchsia (K129), right, has a fabulous textured look without heavy weight. Both sweater patterns were designed exclusively for Chatelaine Crafts by Lyn Youll in Aarlan's Cotelana yarn from R. Stein. To order, turn to page 168.
Molly Copus Christie, Crafts Editor

chatelaine
Crafts
exclusive